

# CHAMOT

## Recombinant Human CXCL1 2

CM125-5HP  
CM125-20HP  
CM125-100HP  
CM125-500HP  
CM125-1000HP



CHAMOT

喬默生物技術(上海)有限公司  
CHAMOT BIOTECHNOLOGY CO., LTD.

# CONTENT

**1** 产品简介

**2** 产品组成

**3** 产品储存

**4** 产品使用

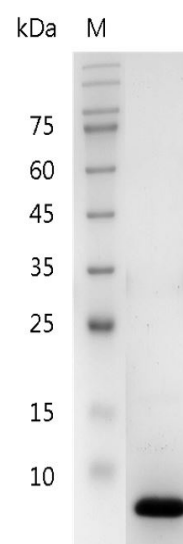
## Recombinant Human CXCL12 (24-88) (C-X-C motif chemokine 12)

编号:	CM125-5HP CM125-20HP CM125-100HP CM125-500HP CM125-1000HP	规格:	5 µg 20 µg 100 µg 500 µg 1 mg
类别:	重组蛋白	应用:	Functional Assay

### 产品简介

**描述:** The stromal cell-derived factor 1 (SDF1), also known as C-X-C motif chemokine 12 (CXCL12), is a chemokine protein that in humans is encoded by the CXCL12 gene on chromosome 10. It is ubiquitously expressed in many tissues and cell types. Stromal cell-derived factors 1-alpha and 1-beta are small cytokines that belong to the chemokine family, members of which activate leukocytes and are often induced by proinflammatory stimuli such as lipopolysaccharide, TNF, or IL1. The chemokines are characterized by the presence of 4 conserved cysteines that form 2 disulfide bonds. They can be classified into 2 subfamilies. In the CC subfamily, the cysteine residues are adjacent to each other. In the CXC subfamily, they are separated by an intervening amino acid. The SDF1 proteins belong to the latter group. CXCL12 signaling has been observed in several cancers. The CXCL12 gene also contains one of 27 SNPs associated with increased risk of coronary artery disease.

**来源:** *Escherichia coli*  
**纯度:** >98% as determined by SDS-PAGE. Ni-NTA chromatography.



SDS-PAGE analysis of recombinant human CXCL12 (24-88)

生物学活性: Measure by its ability to chemoattract human THP1 cells using a concentration range of 20-100 ng/mL.

内毒素检测: < 0.1 EU per 1 µg of the protein by the LAL method.

蛋白序列: MVSLSYRCPCRFFESHVARANVKHLK  
 ILNTPNCALQIVARLKNNNRQVCIDP  
 KLKWIQEYLEKALN with  
 polyhistidine tag at the C-terminus

## 产品组成

成分: 从含有 20 mM sodium citrate, 0.1 M NaCl, pH 4.5 溶液中冻干的蛋白质.

## 产品储存/运输

产品形式	储存温度	储存时间
冻干粉	-20°C至-80°C	自收到之日起1年
重悬液 (初始)	2°C至8°C	不超过1周
重悬液 (经稀释)	-20°C至-80°C	3到6个月

运输方式: 蓝冰

## 产品使用

- 1、开盖前，建议3000-3500rpm离心5min。
- 2、推荐使用无菌水重悬冻干粉，溶液浓度不低于100µg/mL，不高于1mg/mL，并室温静置至少20min以充分溶解。勿涡旋剧烈振荡。
- 3、重悬后的溶液，2 -8°C无菌保存不超过1周。
- 4、如需长期保存，推荐使用无菌的含载体蛋白（如0.1 %BSA、10 % FBS 或5 % HSA ）的溶液进一步稀释（不低于10ug/mL）后分装保存，-20°C至 -80°C无菌保存3到6个月。无血清实验需求时，可更换为 5%海藻糖溶液作为载体。避免反复冻融。

WB= Western Blot; IP= Immunoprecipitation; IF= Immunofluorescence; IHC= Immunohistochemistry;  
 FACS= Fluorescence activated Cell Sorting; FA= Functional Assay